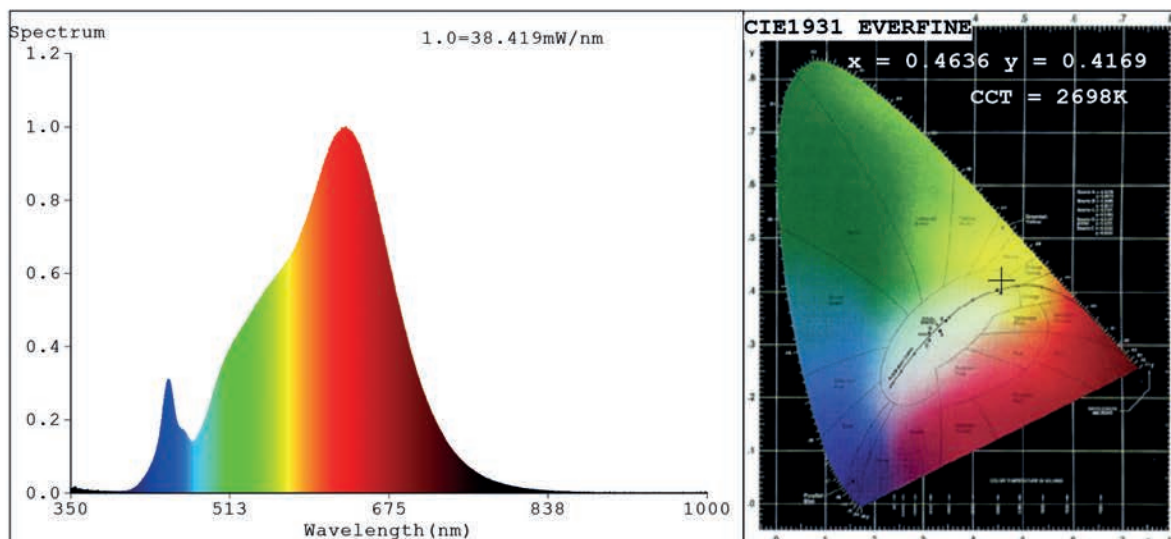


Spectrum Test Report



Color Parameters:

Chromaticity Coordinate: $x=0.4636$ $y=0.4169$ $u'=0.2620$ $v'=0.5303$
 CCT=2698K(Duv=0.0020) Dominant WL:Ld =583.6nm Purity=64.3%
 Ratio:R=26.8% G=70.9% B=2.3%;;Peak WL:Lp=631.3nm FWHM=150.2nm
 Render Index:Ra=95.7 CRI=93.6 TM30:Rf=94 Rg=100
 R1 =97 R2 =97 R3 =96 R4 =98 R5 =96 R6 =97 R7 =96
 R8 =89 R9 =74 R10=92 R11=98 R12=88 R13=97 R14=96 R15=93

Photo Parameters:

Flux = 1692 lm Eff. : 80.51 lm/W Fe = 6.189 W

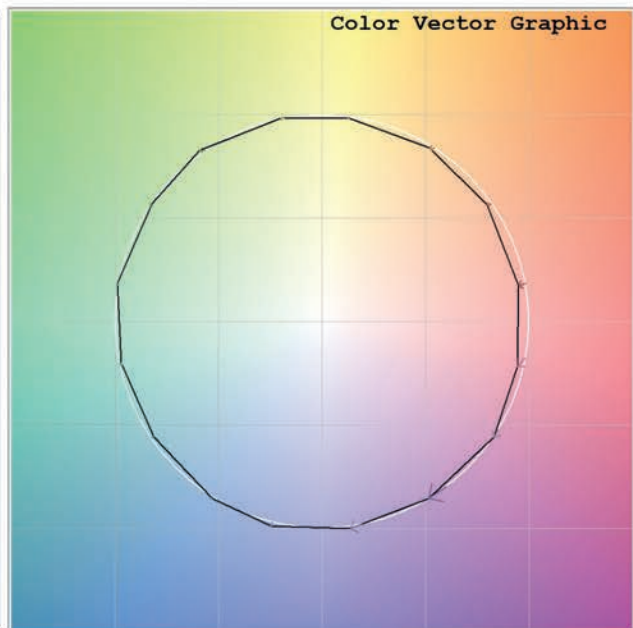
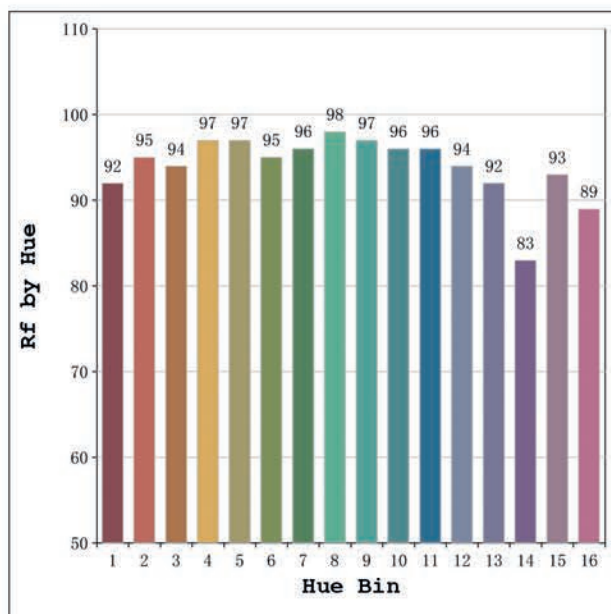
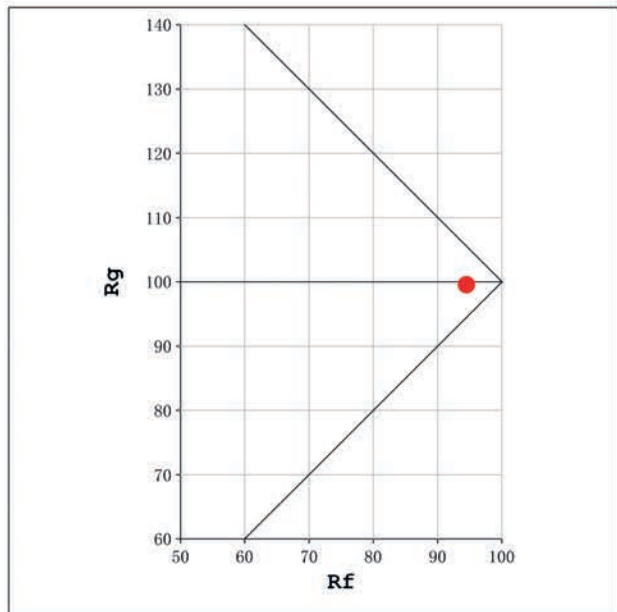
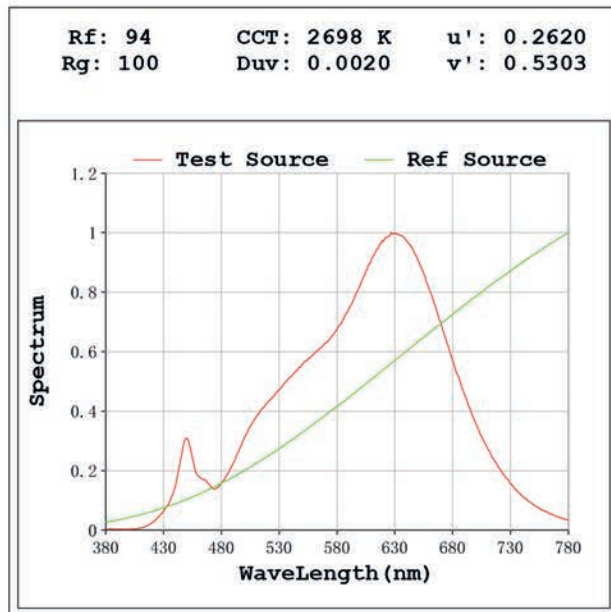
Electrical parameters:

V = 23.998 V I = 0.8755 A P = 21.01 W PF = 1.000

Status: Integral T = 656 ms Ip = 40771 (62%)

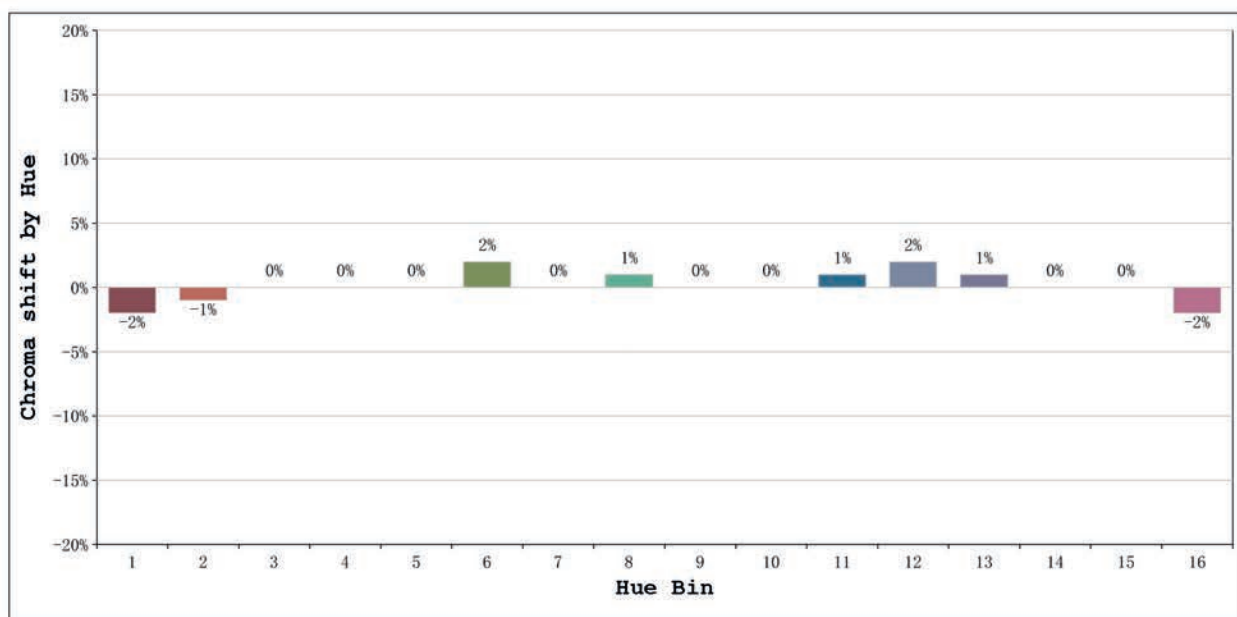
Model:Ecoled Boxled 10° 2700K
 Tester:Sergio Carneros
 Temperature:27Deg
 Manufacturer:Luz Negra

Number: 31.183
 Date:2024-12-18 09:53:32
 Humidity:35%
 Remarks:tira de 106.5cm



Model:Ecoled Boxled 10° 2700K
 Tester:Sergio Carneros
 Temperature:27Deg
 Manufacturer:Luz Negra

Number: 31.183
 Date:2024-12-18 09:53:32
 Humidity:35%
 Remarks:tira de 106.5cm



			Graphic shift(%)	
Hue Bin	Hue Angle	Rf	Chroma	Hue
1	0.0° - 22.5°	92	-2	0
2	22.5° - 45.0°	95	-1	1
3	45.0° - 67.5°	94	0	2
4	67.5° - 90.0°	97	0	1
5	90.0° - 112.5°	97	0	2
6	112.5° - 135.0°	95	2	2
7	135.0° - 157.5°	96	0	-1
8	157.5° - 180.0°	98	1	0
9	180.0° - 202.5°	97	0	0
10	202.5° - 225.0°	96	0	0
11	225.0° - 247.5°	96	1	1
12	247.5° - 270.0°	94	2	0
13	270.0° - 292.5°	92	1	-5
14	292.5° - 315.0°	83	0	-9
15	315.0° - 337.5°	93	0	-3
16	337.5° - 360.0°	89	-2	-4

Model:Ecoled Boxled 10° 2700K
 Tester:Sergio Carneros
 Temperature:27Deg
 Manufacturer:Luz Negra

Number: 31.183
 Date:2024-12-18 09:53:32
 Humidity:35%
 Remarks:tira de 106.5cm